

AWRDS 2005v2 Release Notes



STANLEY 



AWRDS 2005v2 Release Notes
7 October 2005

Release Overview

The 2005v2 release is designed to add to the readiness capabilities of the of AWRDS system. New modules and capabilities included in this release are a Maintenance Management report, Recoverable Assets reports, Fault Inspection capabilities on PDA, Commander FMC and EOH reports and a NMC multiple filter report. This release also includes enhancements to Work Orders, 2406, Container Import, WPS Export, TCMD, Operational Stock, Maintenance Workbench and Fund Ceiling.

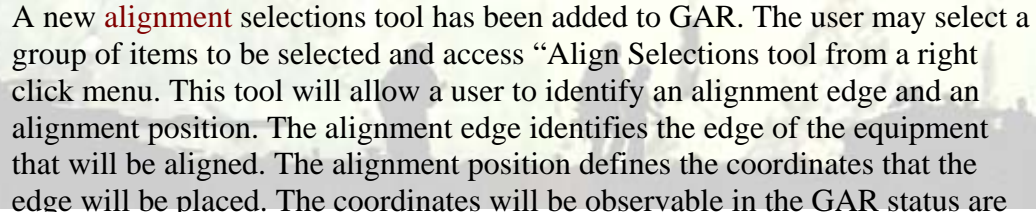
New modules/ capabilities	Modules with enhancements
Maintenance Management report	Work Orders
Recoverable Assets reports	2406
Fault Inspection on PDA	Container Import
Commander FMC and EOH reports	WPS Export
NMC multiple filter report	TCMD
	Operational Stock
	Maintenance Workbench
	Fund Ceiling

New AWRDS Capabilities

1) **Maintenance Management report (SCR# XAPS4D334343):** A Maintenance Management report has been developed for the system. This report will show a user a breakdown of Work Orders and the associated Faults/parts. This report will be accessed by selecting the Maintenance combo box choice from the Reports module under the Reports mode. The user has the ability to filter the report by APC, UIC, Work Center, Supply Status code, Work Order Status, **ERC**, Work Order Priority, Part Priority, NMC age, date, LIN and Work Order Number.

2) **GAR Enhancements (SCR# XAPS4D334326):** GAR will now show a **legend** on the print out. The user will be able to display up to five attributes of information, a date and a title in this legend. The user will also be able to set a scale for the legend. The user can hide this legend and also locate the legend in the drawing.

Two new fields will appear in GAR that will track **the number of days a piece of equipment has been placed** in the drawing and the date which the piece of equipment was placed in the drawing.



A new **alignment** selections tool has been added to GAR. The user may select a group of items to be selected and access “Align Selections tool from a right click menu. This tool will allow a user to identify an alignment edge and an alignment position. The alignment edge identifies the edge of the equipment that will be aligned. The alignment position defines the coordinates that the edge will be placed. The coordinates will be observable in the GAR status are in the lower left corner.

3) **Multiple Facility Enhancements:** A new drop down will appear in User Administration that will allow an administrator to assign a facility to a user at a site which utilizes a **multiple facility database**. When this facility is selected, the information available to the user will change to reflect only information pertinent to the selected facility (Contractor, Labor Category, Work Schedule, etc.).

4) **Work Order enhancements (SCR# XAPS4D334329, XAPS3D421201):** The Work Order Detail report now contains an additional **“INST” field**. Parts which are installed will show ‘Y’ or ‘N’ depending on whether or not they are installed. In the Work Order parts window an additional “Installed” column will be present. To denote a part as installed, right click on the record in the Work Order parts window and select the “Installed” menu item > “Yes”. The same procedure can be performed to set the parts installed property to no. This field is not tied to any other fields such as the due-in quantity or the on-hand quantity. It is at the time, an independent field which marks a part as installed. This value must be set by the user, it is not automatic.

When a Work Order goes into **J Status** (awaiting parts) and ALL the parts are received the Work Order will update to B status. The Work Order will not change from Status J until all parts are received or the user makes the change manually.

- 5) **The backside of the 2406 report will show the Non Availability code (SCR# XAPS4D334331):** The backside of the 2406 report will now display the correct **non-availability reason**: A - Modification, B - Parts, C - Malfunction or D - Support Maintenance. Previously this field displayed the Work Status code. The following table shows the mapping of the Work Status code to the Non Availability Reason:

Code	Description	Work Status code
A	Modification	H, O, 2, 3, 9
B	Parts	B, C, E, F, G, I, J, K, N, Q, R, S, T, U, V, 1, 6, 8
C	Malfunction	A, P, W, X, Y, Z, 0, 2, 3, 5
D	Support Maintenance	D, L, M, 4, 7

- 6) **Fund Ceiling enhancements (SCR# XAPS4D334342):** A user now has the ability to set an **adjustable fund ceiling** through the Project Manager module. Only an administrator will be able to set the current and adjustable fund ceiling. A new column titled “MinPercentWarningLvl” is available on the funds tab. To set the minimum percentage that the funds balance reaches before a warning message appears, select Edit and enter the percentage into this column. Currently this functionality is site optional from the db_info flag “CheckFundBalance” which is set to either “YES” or “NO” (case sensitive). When a user (any user level) creates a Work Order, adds Faults, adds parts or personnel hours which reach the preset fund ceiling warning level (80%, 90%, etc.) they will receive a warning message informing them of the current percentage of the fund ceiling that has been reached. They will have the option to continue or cancel their addition.

- 7) **Standardized Automatic Maintenance Allocation Chart Hour assignment (SCR# XAPS4D334318):** A MAC hours check box will appear between the Condition Code and Maint Level combo boxes on the Create Work Order window. If the user selects this check box, all faults which will be created for this Work Order will default to use **standard MAC man-hours**. The user may later un-check this box on the Fault window if they desire. When the user creates a Fault using standard MAC man-hours, they must select a high-level task, a component task, a sub-component task and Action code for the Projected man-hours to appear. If the MAC data is not yet available the

combo boxes will display that the data is not yet loaded for the equipment identification code.

If a site utilizes **custom data** to project man-hours, the system will check for custom data when the user selects the MAC hours check box (if no MAC data is available).

- 8) **Automated Process to Enter Project and Failure Codes (SCR# XAPS4D334307):** The user will now have **fast-find** ability for entering Project and Failure codes in the Maintenance Workbench module. The user will be able to type the first few characters and the first match will appear.
- 9) **Fault Inspection on the PDA (SCR# XAPS2D027946):** The user will now have the ability to enter **Faults on the PDA** and add them to Work Orders or create new Work Orders when they Hot Sync with the desktop. The user will also have the ability to reprocess records rejected during the Hot Sync process.

A “PDA Fault” icon will now appear on the PDA. The user has the ability to manually enter or scan an EL ID or manually enter a Serial Number. The user may then select the entry and create a Fault by selecting the Task Type, Shop Code, Man-Hours, NMC, FSS and Description. Faults may be modified or deleted. The user also has the ability to multi select EL IDs or Serial Numbers to add multiple Faults quickly.

Upon Hot Sync the data collected in the PDA will be written to an XML file. The data in the XML file will then be transferred to the AWRDS database. The data transferred from the PDA will be validated and records which do not have a matching Work Order will be placed into a rejects table.

To reprocess the rejected records, the user will select Reprocess PDA Rejects from the function list and select the PDA Fault from the pop up window. A Reject Reason field will inform the user as to why the record was rejected. The user may update or delete the records which have been rejected or select the Create Work Order button and create a Work Order for the record. See Figure 1 - PDA for Fault Creation.

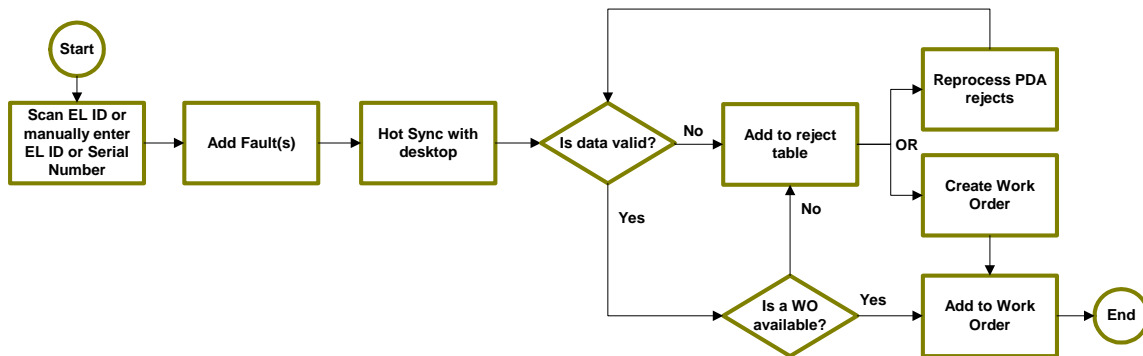


Figure 1 - PDA for Fault Creation

- 10) **Commander reports for Fully Mission Capable % and Equipment On-Hand % (SCR# XAPS4D334346):** FMC % and EOH % reports have been added to the system. These will be accessed by selecting FMC% & EOH% from the function list of the Readiness or Edit Data modes.

The EOH % report will show the authorized, current, authorized substitute and ILO of substitute balance and percentage filled. The FMC% report will show the FMC, PIER and PIEMC percentages in a date range specified by the user. The user will be able to run the report for the Company, Battalion or Brigade level and the user will have the ability to select UICs or LINs. The user will be able to select a date range, ERC of A&P, B&C or both. The report can be grouped by UIC, LIN or both.

- 11) **Ability to import non-APS TCNs in the Container Import Utility (SCR# XAPS3D517301):** The Container Import Utility will allow non – APS unique Transportation Control Numbers (TCNs) to be input into the system by a mass import. The import file must be a Microsoft Excel .xls file. The TCNs must be 17 characters in length and unique.

- 12) **TCN Generator manual input:** The TCMD Work Bench will now allow a user to manually input a TCN. Upon clicking a record without a TCN, the TCN Generator window will pop up. The user may select the Create TCN Manually check box and enter a TCN into the edit box. The TCNs must be 17 characters in length and unique.

- 13) **NMC Multiple Filter report (SCR# XAPS4D334334):** An NMC Multiple Filter report has been developed which shows all dead-lined Equipment with NMC status 'X' and an '02 Priority. The user is able to select APC(s), UIC(s), Work Centers, LIN(s), Model, Status, NMC age or date range and ERC. Search functionality will be available on the filter window.

- 14) **WPS Export enhancements - Second Container Seal (XAPS3D522701):** A second container seal has now been added to the WPS export. Up to four seals may be input into the system.

- 15) **Sub Location field (XAWCOD300102):** A new column has been added to the El_Item_Location table and Equipment List to reflect an item's Sub Location.

The Equipment Packing List report will contain the Sub Location field.

Linker has been modified so that a piece of Equipment will inherit its parent's Location but the Sub Location will not inherit the parent location. When right clicking a piece of piece of equipment in Linker and selecting "Show Item Info", the Sub Location column will be visible.

SARSS-Objective Export will now export the Sub Location field.

ULLS-G Export will now export the Sub Location field.

- 16) **BII/SKO Hand Receipts printing order:** The BII/SKO hand receipt report in the AWRDS Issue Wizard will now contain an “Order by HR” check box. When the user selects this check box, the report will be ordered by the **same order as the BII/SKO hand receipt**.
- 17) **ULLS-G L10 integration:** ULLS-G Import and Export have now been upgraded to be compatible with **ULLS-G SCP 10**.

The ULLS-G Export will include **the exporting Work Order Faults and Parts**. Previously if a piece of equipment has an Open Work Order and needs to be issued to a unit during a contingency, the APS site has to close out its Work Orders and cancel Parts requisitions. Additionally, the gaining unit would have to open their own Work Order and request Parts. During an equipment hand-off, the export now allows for gaining units to take an existing open Work Order, continue to open and close Faults in ULLS-G as well as start receiving Parts that were ordered from the APS site.

- 18) **Document Register enhancements:** The Supply Categories of Maintenance Code (SCMC) will now appear in the Document Register. The user will also not be restricted to the **Facility DODAAC** when creating a requisition file and will be able to select between multiple DODAACs for an APC.
- 19) **System will not pre-load data in the Document Register module SCR# (XAPS5D525101):** Upon loading the Document Register module, the system **will not load data** until the user selects a search condition.
- 20) **Operational Stock report enhancements:** The Shop Stock Replenishment report will reflect the amount spent on each item that was just purchased based upon the quantity replenished. **Repl** will also replace the Rep field.

The Shop Stock Replenishment Exception report **title** will now read “NIINs THAT COULD NOT BE REPLENHISH DUE TO EITHER FUNDS, RO, ROP OH VS DID NOT MATCH”. This report will also not allow a Repl Cost to be greater than zero.

The Bench Stock Replenishment Exception report **title** will now read “REPLENHISH COULD NOT BE COMPLETED DUE TO EITHER FUNDS, DUE IN, OR AUTHORIZED AS BENCH STOCK”. This report will also not allow a Repl Cost to be greater than zero.

Resolved Issues

- 1) **RDD field in Hard Copy TCMD should be a Julian Date (BUG# 24):**
The RDD field in the Hard Copy TCMD should be a Julian date.
These dates are displayed as yy/mm/dd.
- 2) **Negative Due-In in the Bench Stock when the user receives more than On-hand (BUG# Anaconda 021/1895):** When receiving more than On-Hand Quantity, the item shows a negative quantity in the Due-In field of Op Stock. Should not allow the user receives more than On-Hand quantity to avoid the negative Due-In.
- 3) **Incorrect RC and Supl Adv codes when adding from Fedlog to stock (BUG# Anaconda 014/1865):** When a FEDLOG NIIN is added to the stock, the Recoverability Code (RC) is not being pulled from the AMDF_Table (it is defaulted to 'A'. The Supl Adv Code is also being defaulted to '1A' which is incorrect.
- 4) **NIIN and Nomen information do not refresh in Parts window (BUG# 1962/ Afghanistan 006):** NIIN and Nomen information do not refresh in Parts window.
- 5) **Access violation error when attempting to change password to twenty-five characters (BUG# Arifjan 025/1824):** An access violation is received when trying to type a password twenty-five or more characters in length.
- 6) **Access Violation when attempting to change password (BUG# Anaconda 018/1910):** An access violation is received when trying to either change a password by clicking the OK button or canceling the action by clicking the cancel button.
- 7) **GPF when Replace All in Equipment List (BUG# 1721):** The system will crash when <Edit><Replace><All> was selected.
- 8) **Requisition Permission Error (Bug# 1746):** When the user makes the wrong selections, the system will pull all pending requisitions regardless if the user has project assignment permissions in Project Manager or not.
- 9) **Error message/cannot receive local vendor Bench Stock orders (BUG# 1855):** An error message is displayed when attempting to receive a Bench Stock Local Vendor parts order. If the NIIN is changed to Shop/Excess and reordered the receipt processes OK.
- 10) **Nomenclature not displayed in Local Vendor for BS parts (BUG# 1856):** The nomenclature is not displayed in the grid or update window for Bench Stock parts in the Local Vendor Register.

- 11) **SAR Rpt: UI codes are not displayed in the SAR report (BUG# 1877):** Unit of Issue (UI) codes are not displayed in SAR Report when requisitions are generated from Bench Stock. This applies for AMCISS and SARSS files.
- 12) **Need to display Bench Stock items in the Document Register Report (Afghanistan 001/1883):** When running the Document Register Report, the open/pending/order/closed items in Bench Stock were NOT displayed in the report.
- 13) **Need to display Bench Stock items in the SAR Report (Arifjan 029/1889):** When running the SAR Report for pending/receipt Bench Stock records, there are no records showing. The process is not retrieving the records from the fmds.BenchStock table.
- 14) **Hour glass runs continuously in the NIIN Detail Report (BUG# 1662):** The Hour glass runs continuously in the NIIN Detail Report. The user is still able to make selections.
- 15) **Wheeled Vehicles are not showing up on AWRDS Hand Receipts report (BUG# 1419):** Create a new plan. The plan must consist of a UIC with like NSN(s) that have multiple vehicles with different types of Armor (i.e. Y, N, P). Also, the plan should have numerous items without serial numbers. Run AWRDS Issue Wizard - Vehicles do not show on the AWRDS Hand Receipts report.
- 16) **Work Order Detail Report does not show ALL Work Orders (BUG# Afghanistan 005/1933):** Work Order Detail Report does not show ALL Work Orders. There are two specific Work Orders that are shown in the Work Order Summary Report but not in Work Order Detail Report.
- 17) **Fiscal Year figure is incorrectly calculated (BUG# Anaconda 024):** In Weekly Financial report: "Fiscal Year" figure, which is displayed under "Amount Spent to Date", is incorrectly calculated. This figure/amount should reflect total amount spent from the beginning of fiscal year to the ending date of the report period.
- 18) **ULLS-S4 export not exporting the SIC code to the AWEBX120 file (BUG# 1430):** ULLS-S4 export is not sending out a SIC code in the AWEBX120 file. This should be in position 385 and mapped as the Supply Class for 1, 3, and 5 and default to 8 for all other supply classes.
- 19) **Fault closure incorrectly updating Nmc_Stop_Dt in EI_Maintenance_Request (CEG-A 021/1938):** The nmc_stop_dt field in the EI_Maintenance_Request table is being updated when any Fault is closed. This corrupts the NMC days for the item and potentially any calculation that uses these dates.
- 20) **End Item are Nomen are blank in the End Item Parts List (FSB-EY 006/1918):** When an End Item is selected in the left pane, the End Item and Nomen should appear in the right pane. There is a place for this data to fill but it is blank.

- 21) Should not store the WPS Export file under the C:\ root drive (Qatar005/1916):** When the WPS export is run it is writing a temporary file to the C:\ root directory. In some sites access to the root is restricted and the user therefore cannot run the export.
- 22) Driver error when generating Job Order, Inspection sheet and Parts reports (CEB-NEA 011/1914):** A driver error is appearing when attempting to generate the Job Order, Inspection sheet or Parts reports. This occurs thru the pull down menu or by right clicking on the information display area grid.
- 23) Cannot create work order when equipment already had WON in other facility (BUG# Arifjan 031/1976):** If an item already had a WON created in another facility you will receive the attached error when trying to create a new WON in another facility.
- 24) The properties functions for the columns revert back to previous view after edit (BUG# FSB-EY 005/1915):** Any of the properties functions for the columns in the new grid tool do not maintain their properties after editing.
- 25) DCR Report constantly displays data of the initial APC selected (BUG# Afghanistan 003/1934):** DCR Report constantly displays data of the project you choose initially from File > Choose Project Code. Although you try to open a new APC from the project dropdown in the DCR or change APC again from File > Choose Project Code, the report will retain data of the initial project selected displaying the wrong information.
- 26) Only Due In parts show on NMC report by model No and Job Order History (BUG# CEG-A 024/1947):** Only Due In parts show on NMC report by model No and Job Order History report.
- 27) Find window doesn't allow continued search in TCMD Workbench (BUG# 1945):** The find window in TCMD Workbench closes after finding the first instance of a search term in the grid. This should remain open and allow the search of subsequent records.
- 28) Incorrect Repl Cost calculation in the Shop/Bench Stock Replenishment Report (BUG# 1931):** When running the Replenishment for an ordered item, the Repl Cost calculation was incorrect when the RO is a gallon while the UM counts 55 gallons per drum.
- 29) Auths handled incorrectly in Brigade Auth export (BUG# 1930):** When a NIIN exists in multiple condition codes for the same export the quantity exported can exceed the authorization for the NIIN. This happens in cases when the auth quantity is filled before all condition codes are exported and the code continues to apply the auth to the subsequent records.
- 30) Archive module should only archive work orders with U status (BUG# Anaconda 019/1919):** The archive process should only archive work orders when the current work order status is "U". The last and final status of all work orders is "U" which means the customer has signed and picked up the equipment. See attached file for clarification.

-
- 31) **Adding “Services” in MWB results in catastrophic failure (BUG# 1904):** Adding “Services” in MWB results in catastrophic failure.
 - 32) **Find function in Manual Stratification causes Driver Error (BUG# 1875):** When the "Find" button is selected (lower right corner) in Manual Stratification, a driver error occurs.
 - 33) **Eq List records without corresponding record in ASL Authorization are exported (BUG# 1872):** For Brigade Set ASL export with Brigade Set Authorization, only Equipment List records that have a corresponding record in ASL Authorization table should be exported to SARSS.
 - 34) **Quantity mismatch in Exported File (BUG# 1851):** The quantity in the Exported File does not match the quantity in Equipment List view in AWRDS.
 - 35) **Can issue an op stock despite an invalid Document Number (BUG# 1292):** When issuing from the Op Stock the user shouldn't be able to use an existing Document Number. The system should check the current Document Numbers and force the user to enter a unique one.

Open Issues

- 1) **Time stamp missing from new Work Orders (BUG# Arifjan 030/1951):** When Work Orders are entered through the Maintenance Module, only the dates open/closed are preserved. No time data is recorded.
- 2) **Cannot print two sided EOH report (BUG# CEG-A 023/1943):** On a printer with two sided print capability the user cannot print a two sided EOH report.
- 3) **Cannot print two sided 2406 report (BUG# CEG-A 022/1942):** On a printer with two sided capability users cannot print a two sided 2406 report.
- 4) **Should not display the order Excess (DSC=0) in Demand Analysis output (BUG# Afghanistan 002):** The order item from Excess (DSC=0) should not be displayed in Demand Analysis output.
- 5) **Key Violation when trying to purge data in Document Register (BUG# Anaconda 020/1923):** This problem is not consistent. The system was able to purge occasionally without an error. Sometimes this problem occurs when attempting to purge a large amount of records. The key violation is received when closing the print preview window and it takes a long time to close the window. Occasional “No items to purge” errors are also appearing even though these records are closed and they are inside the chosen date range.
- 6) **Blank status and history windows when there are many instances open in the Document Register (BUG# FSB-EY 007/1921):** Blanks Document Register windows appear when more than two instances are open.

- 7) **Receive a SQL error when running MRO for a receipt requisition item (BUG# Anaconda 017/1917):** When running MRO for an item that was ordered from FEDLOG and the item is not in Op Stock, receive a SQL error.
- 8) **Project Code gets set to null when items are edited (BUG# CEG-A 020/1912):** When RDD and/or the Description fields are edited in the Document Register, the Project Code gets set to null. However, if you adjust the Project Code, all future edits seem to be working fine (the project code is not null). In addition, null projects are sent on the AOA AMCISS/SARSS requisition.
- 9) **Run Report button disappears when custom dpi settings are set to 200% (BUG# CEB-NEA 010/1911):** Run Report button disappears when custom DPI settings are set to 200%.
- 10) **Doc Register Report Query Error (BUG# CEG-A 017/1822):** When attempting to run a "Document Register-Standard" report, users are confronted with an error and the report does not generate. No other functionality appears to be impacted after this error is generated.
- 11) **Standard User given access to 1 APC allowed to Run Report for All APCs (BUG# Anaconda 026/1968):** A standard user that was given access to an APC is allowed to run SAR Report for "ALL" APCs.
- 12) **Man-hour detail report should not round man-hour entries (BUG# Anaconda 025/1963):** The total man-hours hours at the fault level are rounded to the 10th digit when displayed at the report. This causes the man-hour calculation to be slightly off (usually .05) when the site is entering man-hours in increments with a 100ths digit.
- 13) **Faults can be added to a closed status work order (BUG# Anaconda 027/1980):** Faults can be added to a closed status work order.

Other Notes

The development staff is in the process of importing more MAC data for the Standard MAC man-hour assignment.